



dental care
fee list 2017/18



imogendental.co.uk

BDA Good Practice
Member



dental care fee list 2017/18

New patient dental health check

– adult £70

– under 18 £30

Extensive examination of your teeth, gums, soft tissues, jaw joints, muscles of mastication, and level of oral hygiene.
Production of treatment plan and written estimate.

Routine dental health check/consultation

– adult £40

– under 18 £15

Extras:	Stain removal (<i>per tooth</i>)	£5
	Tooth smoothing (<i>per tooth</i>)	£5
	Fluoride varnish (<i>per tooth</i>)	£5
	Treatment for sensitivity (<i>per tooth</i>)	£5
	Radiograph (<i>each</i>)	£5
	Emergency appointment (<i>registered patients</i>)	£50
	Emergency appointment (<i>non-registered patients</i>)	£70
	Emergency appointment (<i>out of hours</i>)	£100

Surgical Procedures

Simple extraction	£150
Surgical extraction	£200
Wisdom tooth extraction	£200
Apicectomy	from £250
Extraction with bone graft material placement (This will maintain good bone volume in view of implant placement after 6 months)	£350

Restorations – toothcoloured or amalgam

Anterior (*incisors & canines*)

£75 - £150

To replace fractured or decayed tooth structure.



Posterior (*premolar & molars*)

£80 - £180

Placement of a toothcoloured restorative materials bond to the tooth and therefore strengthen the tooth structure and improve aesthetics.



Amalgam fillings are strong however do not bond to the tooth structure.

Inlays

(white or gold)

from £400

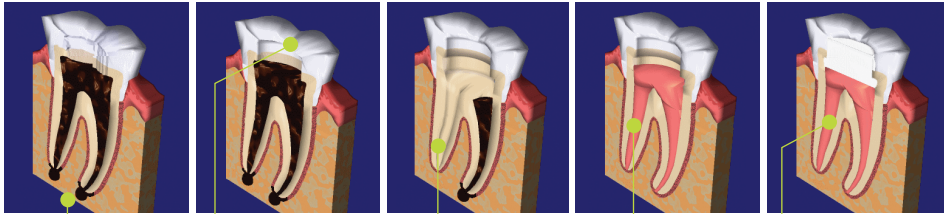




dental care fee list 2017/18

Root canal treatment

Incisor & Canine	£200
Premolar	£250
Molar	£350
Radiographs (each)	£5
Final Restoration	(See restorations)



Abscess at the tip of the root.

The top of the tooth is opened so decay can be removed.

The canals are cleaned out.

The root filling is placed.

Root treatment complete.

Veneers

from **£500**

Custom made porcelain facings that bond to the surface of the tooth after minimal preparations.



Edelweiss Veneers (each)

£250

Edelweiss Veneers are prefabricated veneers that have the appearance and shape of natural teeth. They are made from white filling material which uses modern laser technology with the patented nano-hybrid composite to give a highly glossy surface. The Edelweiss Veneers come in different sizes which are then adapted to your teeth and smile (unlike porcelain veneers which are custom made for each individual exactly), no impressions, no temporaries, and only one appointment making them ideal for nervous patients who would like to minimise time with us.

ID Gold Range

Crowns

Custom made porcelain or gold crowns that are bonded or cemented to the more substantially prepared tooth.

Porcelain Bonded Crown

Porcelain bonded to metal substructure

from £500

Post Retained Crown

A post is inserted into the canal of the tooth to aid retention

from £525

Gold Crown

from £700

Duceragold

Porcelain bonded to a gold substructure. Better Aesthetics and reduced risk of microleakage at crown margins

from £650

Tooth coloured metal-free crown

See our Platinum Range

Full zirconium and E Max Crowns. High aesthetics and strength.

Recement inlay or crown

£45





dental care fee list 2017/18

Bridge work

Custom made bridge work to replace a missing tooth or teeth by attaching to adjacent teeth.

Porcelain Bonded Bridge

Per unit – minimum 2 units required

from £500

Ducragold Bridge

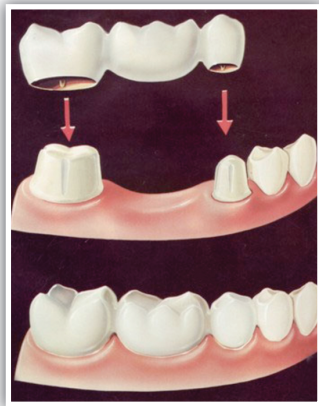
Per unit – minimum 2 units required

from £650

Tooth coloured metal-free bridge

Per unit – minimum 2 units required

See our Platinum Range



Fastbraces (R) Orthodontics

Initial Consultation

£70

Pre-treatment assessment

£500

Treatment

from £1500

Fastbraces® Technology is fast, safe, easy and affordable treatment. With the patented triangular design of the bracket braces, cutting edge techniques and a special heat-activated wire, this new technology is revolutionising the field of orthodontics.



Before



After



Fastbraces[®] turbo^(TM)

Initial Consultation	£70
Pre-treatment assessment	£500
Treatment starting from £2000 for one arch or from £3000 for both arches	

The new and innovative Fastbraces[®] Turbo (TM) technology allows us to improve the smiles of patients in months, and in some cases just weeks. Using just one wire, and with immediate root movement patients can begin to see results within days of starting treatment with Fastbraces[®] Turbo^(TM), making them an increasingly popular choice within our clinic as most cases are completed within 120 days.



rx aligners

(Benson only)

Initial Consultation	£70
Pre-treatment assessment	£250
Treatment	from £1500

rx aligners also known as “clear braces” are an “invisible” way to straighten your teeth, rx aligners works well if you have mild to moderate crowding, each new set of aligners are worn for 2 weeks which will move your teeth a small amount at a time until the required position is achieved.

Ask your dentist for more details



Invisalign

(Kingsclere only)

Initial Consultation	£70
Pre-treatment assessment	£500
Treatment	from £1500

Invisalign treatment consists of a series of nearly invisible, removable aligners that you change every two weeks for the next set of aligners. Each aligner is individually manufactured for your teeth. As you replace each aligner, your teeth will move – little by little, week by week – until they have straightened to the final position.

Ask your dentist for more details





dental care fee list 2017/18

Toothwhitening

Toothwhitening (Home)

£250

Home kit, upper and lower teeth

Please note: Toothwhitening systems do not lighten fillings or crowns/bridge work.



Before



After

Prosthetics

Dentures full acrylic

ID Platinum Range

see brochure

ID Gold Range

from £500

Each – upper or lower



Prosthetics *continued*

Partial acrylic (each)

from £400 with standard teeth

Upgrade Quality

see ID Platinum Range

Chrome (each)

see ID Platinum Range

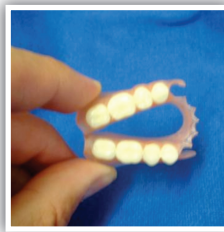


Flexible denture (each)

from £700 with standard teeth

High Quality and Aesthetic teeth

see ID Platinum Range



Gum Shield

*from £120**

For rugby, hockey or boxing

** depending on number of colours*



Night guard / Bruxism guard

Bruxism guards help to protect teeth and jaw joints from the affects of clenching or grinding of teeth.

Soft

£150

Hard

from £200

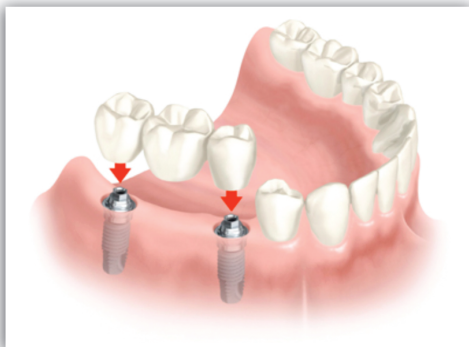
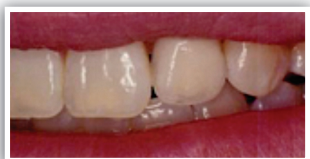


dental care fee list 2017/18

Implants

from £1800

A dental implant is a titanium metal rod which is placed into the jawbone. It is used to support one or more false teeth. Implants are a well-established, tried-and-tested treatment. Over 95 per cent of modern implants should last for many years with the right care.



Implant retained dentures

Titanium implants act like roots of teeth and attach to the denture. This helps to stabilise and improve denture retention. This is a very cost effective treatment for replacing all your upper and lower missing teeth and allowing you to chew all sorts of foods that you may not have had in years.

Placement of two dental implants and a full lower denture:

from £4000

For a more superior retention and stability consider four dental implants, a supporting bar and a full lower denture:

from £7500



Lower denture without any support becomes ill-fitting as the bone resorbs, or melts away.



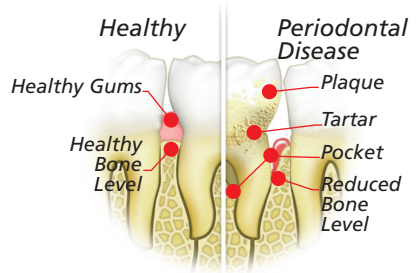
Implant-retained denture provides comfort and stability.



Implant bar-supported denture provides additional stability.

Periodontal treatment

Assessment for patients with mild and advanced periodontal conditions (including Oral Hygiene advice)	£70
Routine scale and polish with hygienist	£55
Periodontal scaling programmes - from	£400
Application of topical antibiotics (<i>per visit</i>)	£30
Periodontal review	£45



What is gum disease?

Gum disease is swelling, soreness or infection of the tissues supporting the teeth. There are two main forms of gum disease: gingivitis and periodontal disease.

What is gingivitis?

Gingivitis means inflammation of the gums caused by plaque bacteria. This is when the gums around the teeth become very red and swollen. Often the swollen gums bleed when they are brushed during cleaning.

What is periodontal disease?

Long-standing gingivitis can turn into periodontal disease. There are a number of types of periodontal disease and they all affect the tissues supporting the teeth. As the disease gets worse the bone anchoring the teeth in the jaw is lost, making the teeth loose. If this is not treated, the teeth may eventually fall out. In fact, more teeth are lost through periodontal disease than through tooth decay.

Dental care - payment plan

We offer a dental care plan that allows you to budget for your dental treatment by paying on a monthly basis for routine examination, x-rays and hygiene appointments. For more information please ask a team member.

The ImogenDental membership includes:

- Regular dental appointments (two per year)
- Regular hygiene appointments (two per year)
- 20% discount off all treatment fees.
(excluding toothwhitening, implants and orthodontic care)
- Worldwide Dental Emergency Assistance Scheme.
- Discounts are not available on treatments referred out of the practice.
- Additional plans are available at the practice.

Please ask your dentist for more information.

Prices are subject to change without notice.

Your dentist will be more than happy to discuss any treatment that you desire.

Written quotations are given before any planned treatment is commenced.

We accept payment by cheque, cash or credit cards.

Payments for dental treatment must be paid on the day of appointment.

ID finance plan

Spread the cost of your dental care by enjoying our 0% finance plan over 6 or 10 months. Ask a Imogen Dental team member for details. Terms & conditions apply. Minimum finance £400.



Dr. Neel Tank & Associates

North Street. Kingsclere. Berkshire. RG20 5QX
T: 01635 299981 E: kingsclere@imogendental.co.uk

14 High Street. Benson. Oxon. OX10 6RP
T: 01491 833380 E: benson@imogendental.co.uk

Imogen Dental (Benson) is part of Imogen Dental Limited. Company number: 8450290,
Registered office: 14 High Street, Benson, Oxon OX10 6RP. Director: Neel Tank .

Scan me to
discover more



@ImogenDental

imogendental.co.uk